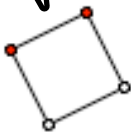


# Using Custom Tools

Use and configure Custom tools.

©2009 Key Curriculum Press

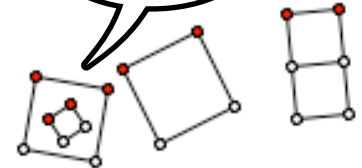
Suppose you have a Square tool in your Polygons sketch.



You can choose it from the Custom Tools menu...

Create New Tool...  
Tool Options...  
Show Script View  
-- This Document --  
Equilateral Triangle  
Square  
Hexagon  
Choose Tool Folder...

and use it many times.



make sure the Polygons sketch is also open.

To use it in another sketch...

Polygons.gsp

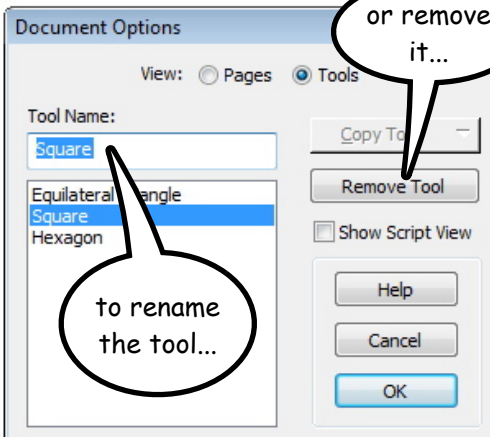
Pythagoras.gsp

In the Polygons sketch, you can use Tool Options...

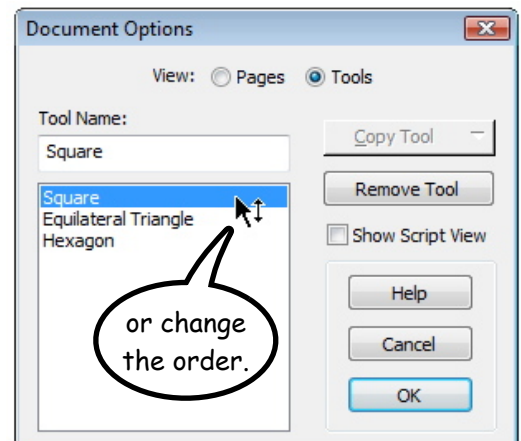
Tool Options...

or remove it...

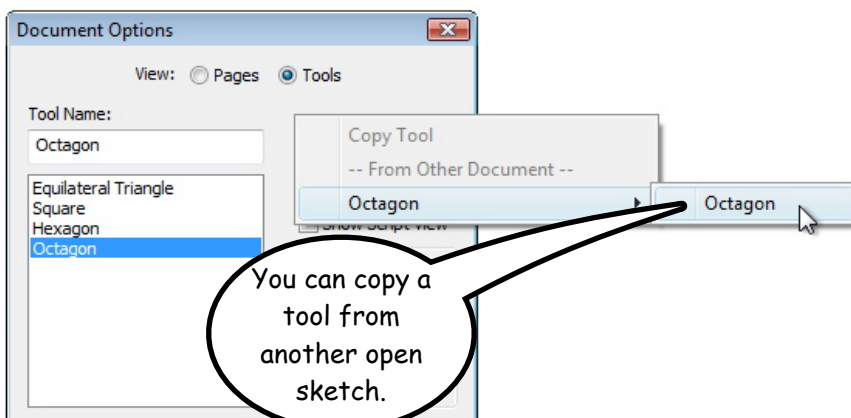
to rename the tool...



or change the order.



You can copy a tool from another open sketch.



Choose **Help | Sample Sketches & Tools** for a collection of many useful tools.